

## Friday, October 28

- 7:30-8:30 Registration  
8:30-9:30 Keynote Presentation:  
Creating Connections  
9:30-10:30 Early Intervention & OT:  
Working yourself out of  
a job!  
10:30-10:45 Break  
10:45-11:45 Tri-District Early  
Childhood Program:  
Overview & OT's Role  
11:45-1:00 Lunch on your own  
1:00-2:00 Statewide Supports and  
Resources for School  
Based Therapists: Where  
Can I Go For Help?  
2:00-2:15 Break  
2:15-3:15 Filling the Occupational Void:  
How OTs Can Be a Part of the  
Transition Team!  
3:15-3:30 Break  
3:30-4:30 Community Panelists:  
Why Provide School  
Services? Life After  
Graduation.

## Saturday, October 29

- 8:00-8:30 Registration  
8:30-3:30\* **Ready S.E.T.**  
**Go!** Sensorimotor  
Earlychildhood/  
Elementary Themes

\*There will be an hour lunch on your  
own during this time

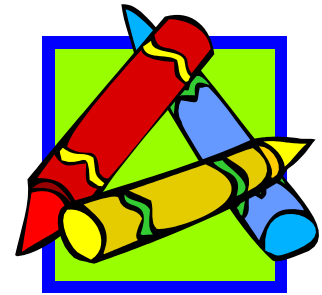
### Directions

From North: Take I-430 S to the  
Colonel Glenn exit & turn right.  
From South: Take I-430 N to the  
Colonel Glenn exit and turn left.  
The campus is on the right across  
from the Rave Theater

AROTA  
P.O. Box 10674  
Conway, AR 72034

AROTA Fall Conference

## Collaboration for Success: Occupational Therapy in Early Intervention & Schools



October 28-29, 2011

Baptist Health Schools

Little Rock

11900 Colonel Glenn Rd

Little Rock, AR 72210

Arkansas Occupational Therapy  
Association

Email: [office@arota.org](mailto:office@arota.org)

P.O. Box 10674

Conway, AR 72034

[www.arota.org](http://www.arota.org)

# Meet Our Presenters

## Keynote Presentation - Creating Connections

**Martha Kay Asti** has been with the Arkansas Department of Education (ADE), Special Education Unit since January 2008. Prior to that time, Mrs. Asti spent 34 years working in Arkansas public schools. Her classroom experiences during that time included teaching general elementary students and elementary and secondary students with disabilities. She began her twenty one year administrative experiences as a Coordinator of Special Education programs for students K-12, and served as Director of Special Education for thirteen years. In June, 2011 Mrs. Asti became Interim Associate Director of Special Education for the Arkansas Department of Education.

Mrs. Asti holds a Master's Degree in Special Education from the University of Arkansas at Fayetteville with additional graduate work in educational administration. She is a member of the Arkansas Association of Educational Administrators, the Arkansas Association of Special Educational Administrators, Council for Exceptional Children, Council of Administrators for Special Education, and the Association of Supervision and Curriculum Development.

## Early Intervention & OT: Working yourself out of a job!

**Penny Jester** is an Early Intervention Specialist that has provided services for more than 15 years in the Arkansas Early Intervention Program. She obtained a Bachelor's of Science degree and a Masters of Education degree in Early Childhood Special Education from UALR. Penny is the director and owner of Kidsource Therapy located in Benton, AR with satellite locations in Pulaski County and Pine Bluff. She has been a leader in providing Early Intervention Services for infants and toddlers.

**Sheila Hart-BSE-DT** has a Bachelor's Degree in Special Education. She is an instructional specialist for Early Childhood through the age of 21. She has worked in Special Education/Early Intervention for 11 years. Sheila has a wide range of experience working with children with various developmental disabilities. She especially enjoys babies and provides developmental therapy services to children at high risk for delays. Sheila is committed to the 'team' approach, working closely with parents/family members as well as other therapists who are serving the child.

## Tri-District Early Childhood Program: Overview & OT's Role

**Tabitha K. "TK" Roseberry, MS, OTR/L** is currently employed by the Tri District Early Childhood Program in North Little Rock, Arkansas. She works with children ages three to five years old in early intervention programs, head start programs, day cares, and ABC programs. She works closely with speech language pathologists, early childhood special educators, physical therapists, and behavior team specialists to identify and treat children with special needs. TK graduated in 2007 from the University of Central Arkansas with a Master's degree in Occupational Therapy. She is a 2002 graduate of Sheridan High School. TK has worked primarily in the schools and private practice settings since graduating. She is married to Bryan Roseberry and lives in Little Rock, Arkansas.

## Statewide Supports and Resources for School Based Therapists: Where Can I Go For Help?

**Meg Clevenger OTR/L** Meg is a graduate of Eastern Michigan University with extensive experience in pediatric occupational therapy. She worked at Arkansas Children's Hospital for a number of years before becoming the therapy coordinator for the states largest school district. Meg currently serves as an Easter Seals Outreach Consultant. She has expertise in all aspects of school based occupational therapy as well as treating individuals with a variety of diagnoses.

**Amy Goddard OTR/L** graduated from East Carolina University. She has many years of experience working with children in a variety of settings ranging from inpatient rehabilitation to school based intervention. Before becoming a consultant for Easter Seals Arkansas Outreach, Amy was the therapy coordinator at the Children's Rehabilitation Center. She has expertise working with children with head injuries and multiple disabilities. She is certified in Handwriting Without Tears and is also a certified kinesiotape practitioner.

## Filling the Occupational Void: How OTs Can Be a Part of the Transition Team!

**Bonnie Boaz** serves as the Coordinator for Arkansas Transition Services. She graduated from the University of Arkansas at Little Rock with a Master's degree in Orientation and Mobility for the Blind and Visually Impaired in 1996. For several years, she worked with individuals with visual impairments and helped them gain the independence and mobility needed to reach their goals and become successful. In 2001, Ms. Boaz began her work in secondary transition services as a Transition Consultant for three educational cooperative regions.

**Tina A. Mankey, Ed.D, OTR/L** has over 25 years of experiences as an occupational therapist and has been a faculty member at the University of Central Arkansas (UCA) since 1996. She is responsible for the development and teaching of the pediatric courses in the occupational therapy program. Dr. Mankey continues to provide direct and consultative services within the state. She has focused her research agenda in transition services with her most recent study that investigated the status of occupational therapy services in secondary transition services in Arkansas. Currently, Dr. Mankey is working with the Arkansas Transition Team to build the role and involvement of occupational therapy. Ms. Boaz and Dr. Mankey have worked together for the last 4 years to promote occupational therapy services in transition planning.

## Community Panelists: Why Provide School Services? Life After Graduation.

**Angela Traweek, OTR/L** is an occupational therapist who has practiced in pediatric, adult and geriatric rehabilitation for the past twenty years. She received her Bachelor of Science degree at UCA in 1991 then spent eight years in Houston, Texas working in the acute care and rehabilitation arena. In 1998, she relocated back to Arkansas residing in Russellville.

# Meet Our Presenters

She began her career with Friendship Community Care in 1999 as a staff occupational therapist for pediatric services. Angela became the Director of Pediatrics in 2000 where she directed the process of planning, development and implementation of therapy services, early intervention and day habilitation services at MiChild Enrichment Center in Russellville. Angela is an active member of the Arkansas Occupational Therapy Association and the American Occupational Therapy Association. She was the recipient of the Clinical Merit Award for Occupational Therapy in 2004 and the Outstanding Service to the Profession of Occupational Therapy Award in 2006. Angela was promoted to Vice President of Pediatrics for Friendship Community Care in 2005 and now oversees preschool programs, therapy programs, and behavioral health programs in Russellville, Marshall, West Fork, Bryant, Siloam Springs, Danville and Pottsville. She and her husband, Johnny, have two children, Emerson and Addison.

**Kathy Weatherl** has worked in the field of developmental disabilities for the past 26 years. She received her Bachelor of Science degree at Arkansas Tech University in 1985. She began her career in developmental disabilities at Friendship Community Care (FCC) while she was finishing her education at ATU and remained at Friendship for 21 years, serving as Vice President of Services. Kathy became the Assistant Director of Quality Assurance for Developmental Disability Services upon leaving FCC. After her time at the state, Kathy returned to the private provider sector and began working for Independent Living Services as the Director of Day Services. Kathy is also a CARF surveyor and travels to various states to evaluate programs for national accreditation status.

**Betsy Barnes** is the Program Administrator for the EmployAbility Project with Division of Aging and Adult Services. The EmployAbility Project is part of a federal grant from Centers of Medicaid and Medicare to promote employment options for individuals with disabilities. She earned a Master in Public Administration from UALR. She has years of experience administering Supported Employment and other Employment Assistance programs. She serves on numerous committees advocating for individuals with disabilities and works to implement innovative programs and services to include: Association for Persons in Supported Employment (APSE) Board; AR-APSE; Governor's Technology Equipment Revolving Loan Fund; Workforce Investment Board; Arkansas Disability Coalition; Arkansas Mental Health Planning and Advisory Council; Can Do Inc; Gaines House Inc. Board; and People First.

**Jeannie Tindall** is the Community Care Director/CASSP Care Coordinator. She graduated from the University of Central Arkansas in 2000 with a BA degree in Sociology. She gained employment with Counseling Associates, Inc. in the same year and has moved progressively from being a children's case manager to the Care Coordinating Director and CASSP Care Coordinator for our area. Her focus has been expanding our services for children and families while improving community links. Currently, our Wraparound Program serves on average 62 families in our catchment area.

## Ready S.E.T. Go! Sensorimotor Early-childhood/Elementary Themes

In this seminar, healthcare professionals, educators, and parents will learn characteristics about each sensory system, signs/symptoms of Sensory Processing Disorder, and practical strategies for application in children's daily routines, along with current research to support sensory processing practices. In addition, attendees will learn how to apply sensorimotor activities, as described in *Learn to Move, Move to Learn* (AAPC 2004), to both school and home settings. This unique approach is geared toward serving young children in an inclusive environment with a transdisciplinary approach. The sensorimotor groups are planned to provide experiences to stimulate and integrate the underlying sensory systems in the human body, which incorporate activities and experiences using motor, cognitive, communication and social skills to enhance learning. Adaptations will be discussed for children with Autism Spectrum Disorder, Down Syndrome, Cerebral Palsy, and Developmental Delay. Hands on activities will enrich the learning process for participants. Attendees of will learn skills and strategies they can immediately use in their classroom and home settings. Listen, look, feel, taste, smell! Sensory input surrounds us. Just as intellectual abilities vary from child to child, sensory processing abilities also vary widely. Some children with a sensory processing disorder are unable to tune out all the information their bodies perceive, while others are unable to perceive some of the information that they need to do their schoolwork. Imagine all the sensory input that must be processed to dynamically engage in daily activities. Sensory processing is the reason that most people can perceive and use this information while maintaining a focused state of alertness. work' opportunities

A few children will respond to minor changes in the environment or schedule while others may need more extensive 'Sensory Strategies' which may include quiet times away from the class, increased movement opportunities, oral motor activities, and/or 'heavy work' opportunities incorporated in their daily routines.

**Jenny Clark, OTR/L, BCP (AOTA Board Certification in Pediatrics)**, is a licensed pediatric occupational therapist with over 20 years experience working as a school-based occupational therapist, independent contractor for early intervention services, private practitioner, speaker, consultant, author, and inventor. Ms. Clark currently owns a pediatric therapy private practice *Jenny's Kids, Inc.* She received her Bachelor's degree in Occupational Therapy and graduated with distinction from the University of Kansas in 1990. She has written journal articles that have been published in professional journals such as *OT Practice*, *Occupational Therapy Forum*, and *Journal of Occupational Therapy Students*. Additionally, Jenny has written a book on sensory processing entitled *Learn to Move, Move to Learn: Sensorimotor Early Childhood Activity Themes* (AAPC 2004), and more recently has written a sequel *Learn to Move, Moving Up! Sensorimotor Elementary School Activity Themes* (AAPC 2009). In addition, she has published two DVD's *Learn to Move: Dinosaurs* (AAPC 2005), a companion to her first book, and *Sensory Processing Disorder Kit: Simulations and Solutions for Parents, Teachers, and Therapist* (AAPC 2006), which won the 2007 media in excellence video award from Autism Society of America. Jenny's newest publication is a music CD, *Sing, Move, Learn* (AAPC 2010), which accompanies the songs in her first book. Ms. Clark is a contributing author for the book *Autism Spectrum Disorders: A Handbook for Parents and Professionals* (Greenwood Publishing Group 2007), as well as a chapter author for *Autism Spectrum Disorders: Foundations, Characteristics, and Effective Strategies*. (Pearson Publishing 2011 by Boutot & Myles). Jenny is the inventor of the Patent-Pending "*Weigh*" *Cool Bracelet* ([www.abilitations.com](http://www.abilitations.com)). Jenny Clark has spoken both nationally and internationally on a variety of topics, including sensory integration/processing.

Name: \_\_\_\_\_ Date Received by Office: \_\_\_\_\_  
Address: \_\_\_\_\_  
\_\_\_\_\_  
Email: \_\_\_\_\_  
Phone: \_\_\_\_\_

\_\_\_\_\_ Keynote Presentation - Creating Connections (1 CEU)  
\_\_\_\_\_ Early Intervention & OT: Working yourself out of a job! (1 CEU)  
\_\_\_\_\_ Tri-District Early Childhood Program: Overview & OT's Role (1 CEU)  
\_\_\_\_\_ Statewide Supports and Resources for School Based Therapists:  
Where Can I Go For Help? (1 CEU)  
\_\_\_\_\_ Filling the Occupational Void: How OTs Can Be a Part of the Transition  
Team! (1 CEU)  
\_\_\_\_\_ Community Panelists: Why Provide School Services? Life After  
Graduation. (1 CEU)  
\_\_\_\_\_ Ready S.E.T. Go! Sensorimotor Earlychildhood/Elementary Themes  
(6 CEUs)

\_\_\_\_\_ **Total CEU's**

\_\_\_\_\_ **Total Amount Due**

Registration Dues:

\*Early Bird AROTA Member: \$15 per CEU

\*Early Bird Non-AROTA Member: \$25 per CEU

\*Student Rate: \$20 per day (this rate includes registration & membership dues)

If registering after October 15, add \$25 to total amount

You can pay by cash, check, or Pay Pal. If paying by PayPal, you must also send in a registration form with proof of Pay Pal purchase. You can access Pay Pal through AROTA's website.

You can complete a membership application at the time of registration for the discounted price. The membership application can be completed on the AROTA website.